

AP Studio Art: Drawing and Painting  
Mr. Derrick

## **Summer Assignments | Material Requirements**

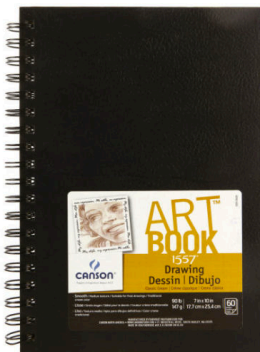
- Michael's Art and Crafts - Eatontown, located on Rt. 36 East opposite the Monmouth Mall.
  - A.C. Moore - Shrewsbury, Rt. 35 North
  - ★ Colorest Art Supply - Redbank 160 Newman Springs Rd. East
- 

- graphite/drawing pencil set (minimum 6 pencils: from 4h → hb → 4b)
- small pack of tortillions/blending stumps
- BIC or standard mechanical lead pencil(s) for fine detail and mechanical illustration
- kneaded / gum eraser / graphite eraser(s)
- 2 black technical ink drawing pens: (.01 fine point, .03 standard point)
- 1 small black india ink jar - with soft bristle watercolor brushes (#2, #1, #0)
- 1 hard cover sketchbook - either 9 x 12" or 11 x 14" - classic hard bound or wire bound is optional
- paper specs: heavy weight drawing - 70 to 90 lb. paper (suggested)
- ★ Must be **Acid Free Paper** - bright white or off white paper color is suggested



*Sketchbook journals are a personal choice. However, quality acid free drawing paper and hard cover protection are a must. Make your decision by actually feeling the tooth of the book paper/pages. Suggestions as listed.*

**Cachet Studio Hardbound or Wire bound Sketchbook**



**Canson or Strathmore: Standard/Field Drawing Sketchbook(s)**



**Artist's Loft: Hardbound or Wire bound Sketchbook**

## **Assignments 1:**

10 - Full page **sketches (5 minimum using ink)**  
must work directly from life observation, no picture references

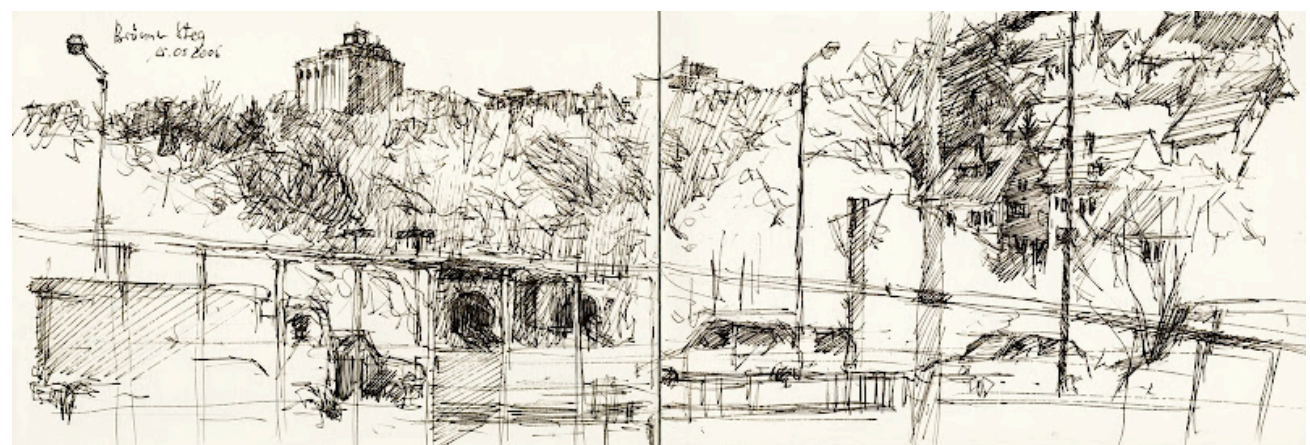
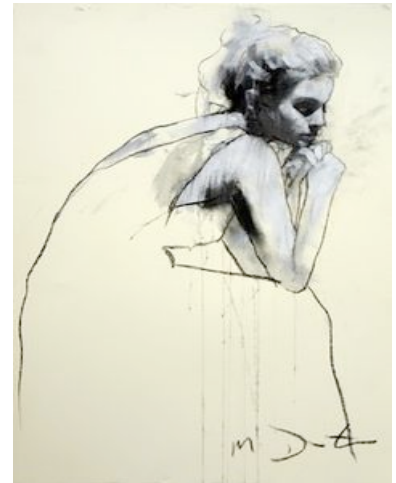
**Remember: sketching is “mode” of recording information**

### **- TIPS -**

- **internet search ink sketching/drawing techniques**
- **sketching the Urban Landscape with ink pen**
- **sketching still life objects with ink pen**

### **- REMEMBER -**

- not intended to be a refined illustration or drawing
- rapid (you should hear the drawing tool on the paper surface)
- stay loose and confident, (keep your hand moving at all times)
- show evidence of directional/varied mark making
- suggest large areas of general value/shading
- minimal / no erasing (redraw over marks as to keep the hand moving)
- overhand / loose grip
- Complete your sketches at interesting locations, including people/figures
- Capture exterior / architectural / natural spaces and subject matter
- Capture interior spaces, with suggestion of the human figure
- Work from self arranged objects of interest, accessories, toys/tools household/assorted items
- Enjoy but keep your focus! (each sketch, 25 - 45 minutes minimum)





## **Assignments 2:**

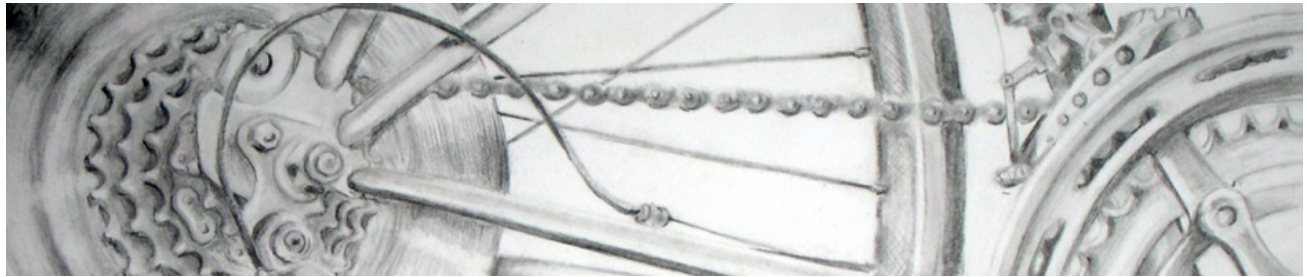
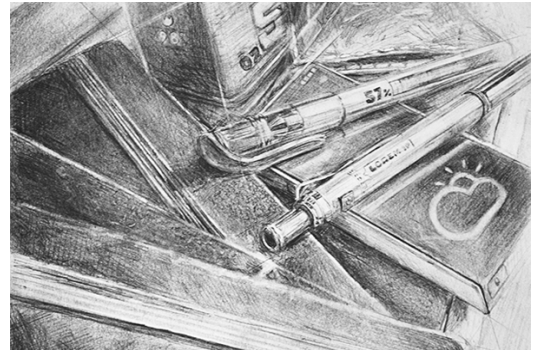
1 - full page graphite rendering from self directed photography

**Rendering** - a refined drawing with a full value range

**Value** - amount of dark and light tones within the image

### **- REQUIREMENTS**

- Work from one full size print, not a digital screen.
- Subject Matter: open
- **Must crop inward** on the subject matter, working to the edge of the paper surface
- Value Range: Full
- 3/4 inch margin around page (do not draw to the edge of the paper surface)
- 3.5 - 4 hours minimum



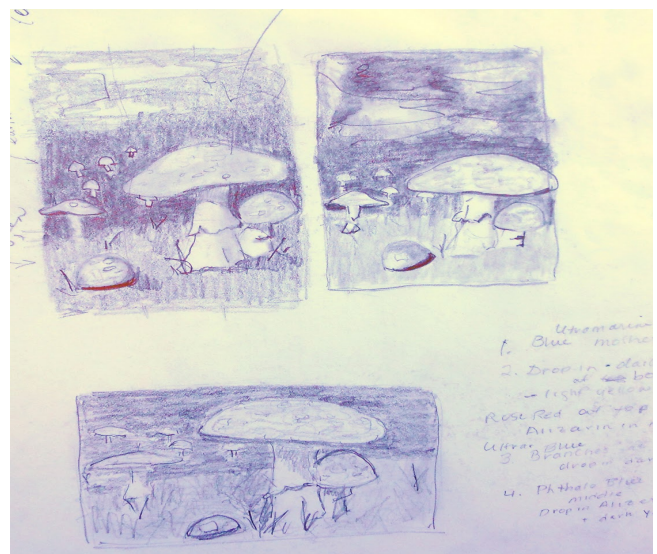
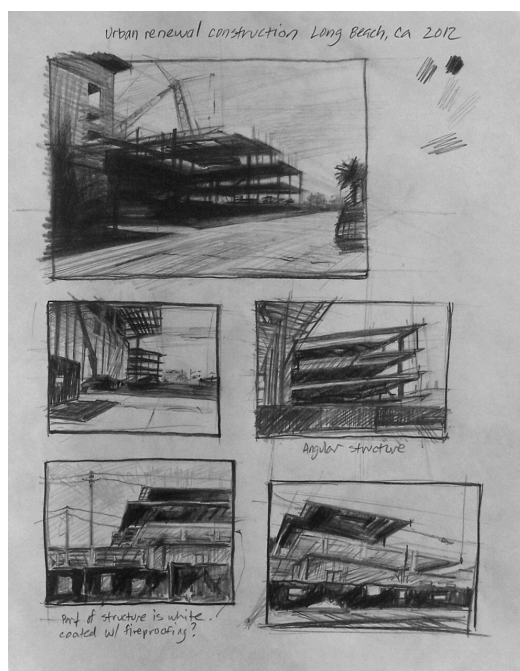
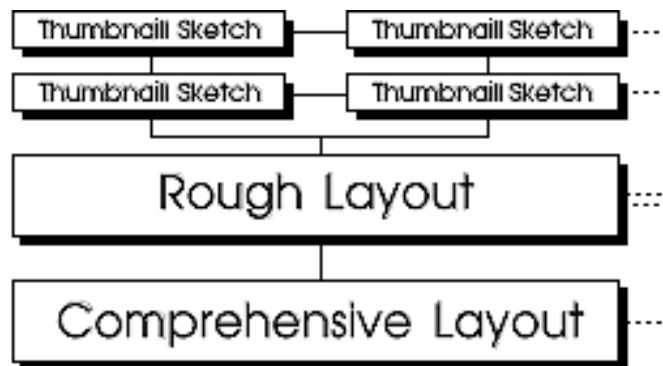
### Assignments 3:

1 - full page ink/wash drawing

#### **- REQUIREMENTS**

- self gathered reference material
- Subject Matter: open (*do not plagiarize or copy published art works/illustrations*)
- work from full size reference prints, not a small digital screen.
- Value Range: Full
- 3/4 inch margin around page (do not draw to the edge of the paper surface)
- 3.5 - 4 hours minimum
- Complete **3 thumbnail variations** for the same subject matter (*show options*)
- Complete one full page/final ink drawing using the most effective option (*composition*)

**Thumbnail** - approximately 3" x 4" conceptual sketch that shows the general composition, value structure and variation within the subject matter. They also allow the artist to become familiar with the subject matter and explore options to find the most effective pictorial solution.



## **MID Summer Critique**

- Attendance Mandatory / Graded

- **August 7, 2017**

9:00 - 10:30 am - Studio 339

- **Assignment 1**

*MP1 FORMATIVE: due - 5 samples (review all other works in progress)*

- **Assignment 2**

*MP1 SUMMATIVE: due*

- **Assignment 3**

*Further Presentation Discussions*